

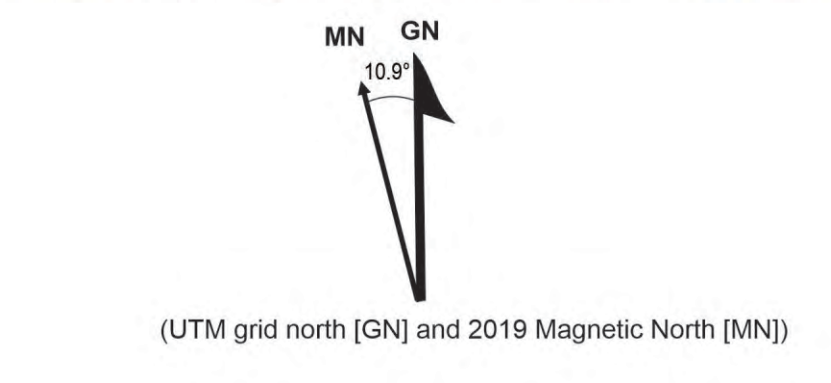
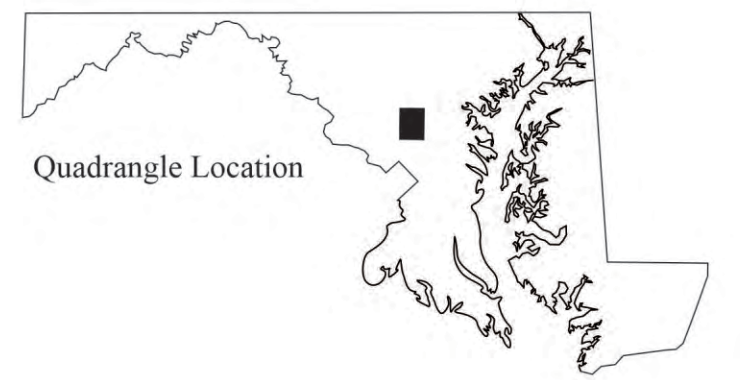
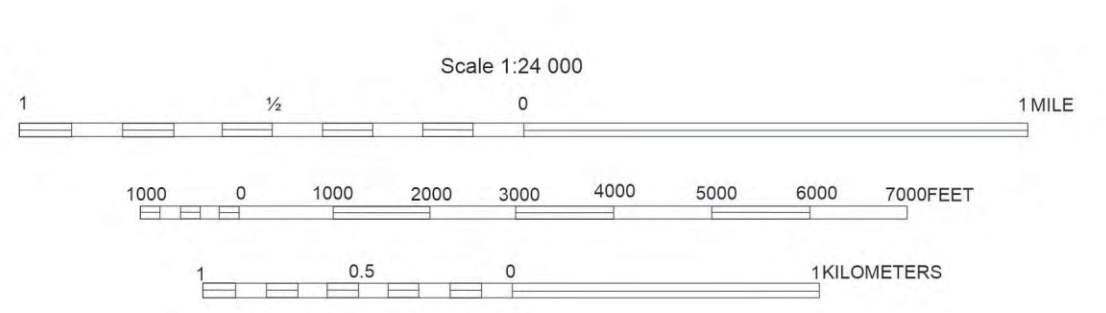
North American Datum of 1983 (NAD83)  
 World Geodetic System of 1984 (WGS84)  
 Geographic coordinates (latitude-longitude). Shown near corners  
 Reported 2019 magnetic north declination (center of Clarksville quadrangle): 10.9°W  
 To determine current magnetic declination see: (<http://www.ngdc.noaa.gov/geomag/declination.shtml>)

## Geologic Map of the Clarksville Quadrangle, Howard, Montgomery, and Prince Georges Counties, Maryland

By  
**David K. Brezinski**  
 2024

Adjoining 7.5-minute quadrangles  
 (Clarksville quadrangle shaded)

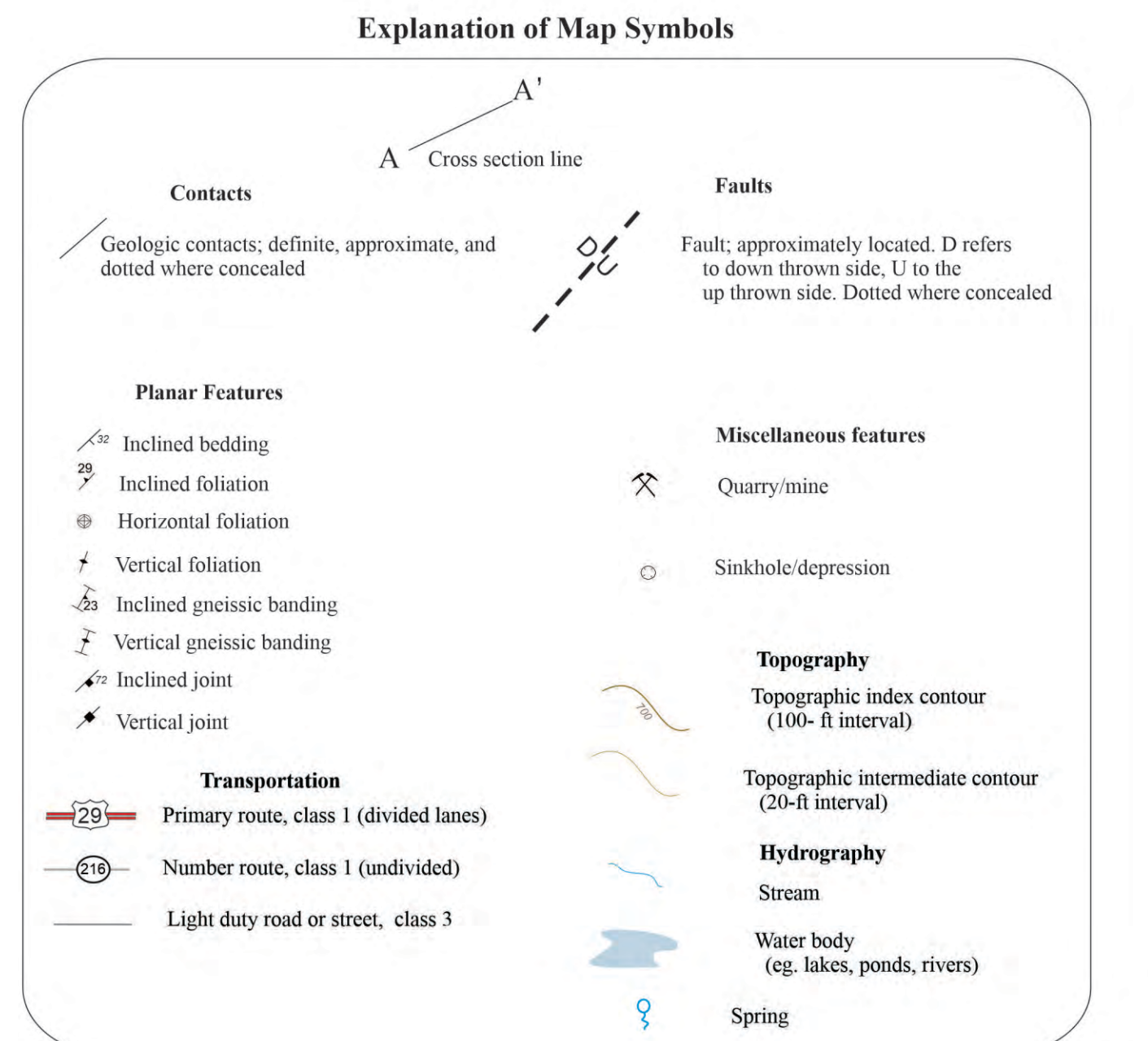
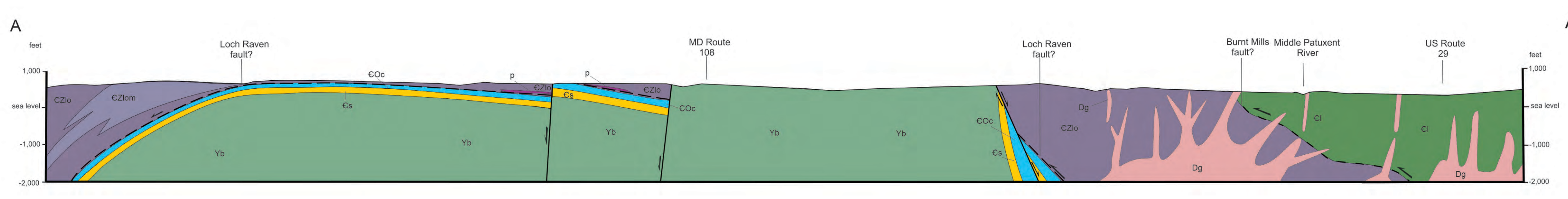
1	2	3	1 Woodbine
			2 Sykesville
			3 Ellicott City
4	5	6	4 Sandy Spring
			5 Savage
			6 Kensington
6	7	8	7 Beltsville
			8 Laurel



**Use Constraint:** The Maryland Geological Survey makes no warranty, express or implied, as to the use or appropriateness of the data and there are no warranties of merchantability or fitness for particular purpose or use. The Maryland Geological Survey makes no representation as to the accuracy or completeness of the data and may not be held liable for human error or defect. Data are only valid at 1:24,000 scale. Data should not be used at a scale greater than that.

**Acknowledgements:** This map partially funded by the U. S. Geological Survey, National Cooperative Geologic Mapping Program, under USGS award number G21AC10768. Information portrayed on this map consist of recently collected data supplemented with archived notes of William Crowley (*circa* 1976). The views and conclusions contained in this document are those of the authors and should not be interpreted as necessarily representing the official policies, either expressed or implied, of the U. S. Government.

Geologic field mapping conducted 2022-2023.  
 The facilities and services of the Maryland Department of Natural Resources are available to all without regard to race, color, religion, sex, sexual orientation, age national origin or physical and mental disability.  
 Version: CLARK2024.OF  
 Released December 2024



STATE OF MARYLAND  
 Wes Moore  
 Governor  
 Aruna Miller  
 Lieutenant Governor



DEPARTMENT OF NATURAL RESOURCES  
 Josh Kurtz  
 Secretary  
 MARYLAND GEOLOGICAL SURVEY  
 Stephen Van Ryswick  
 Director  
 DNR PUBLICATION-DNR 12-120424-2

