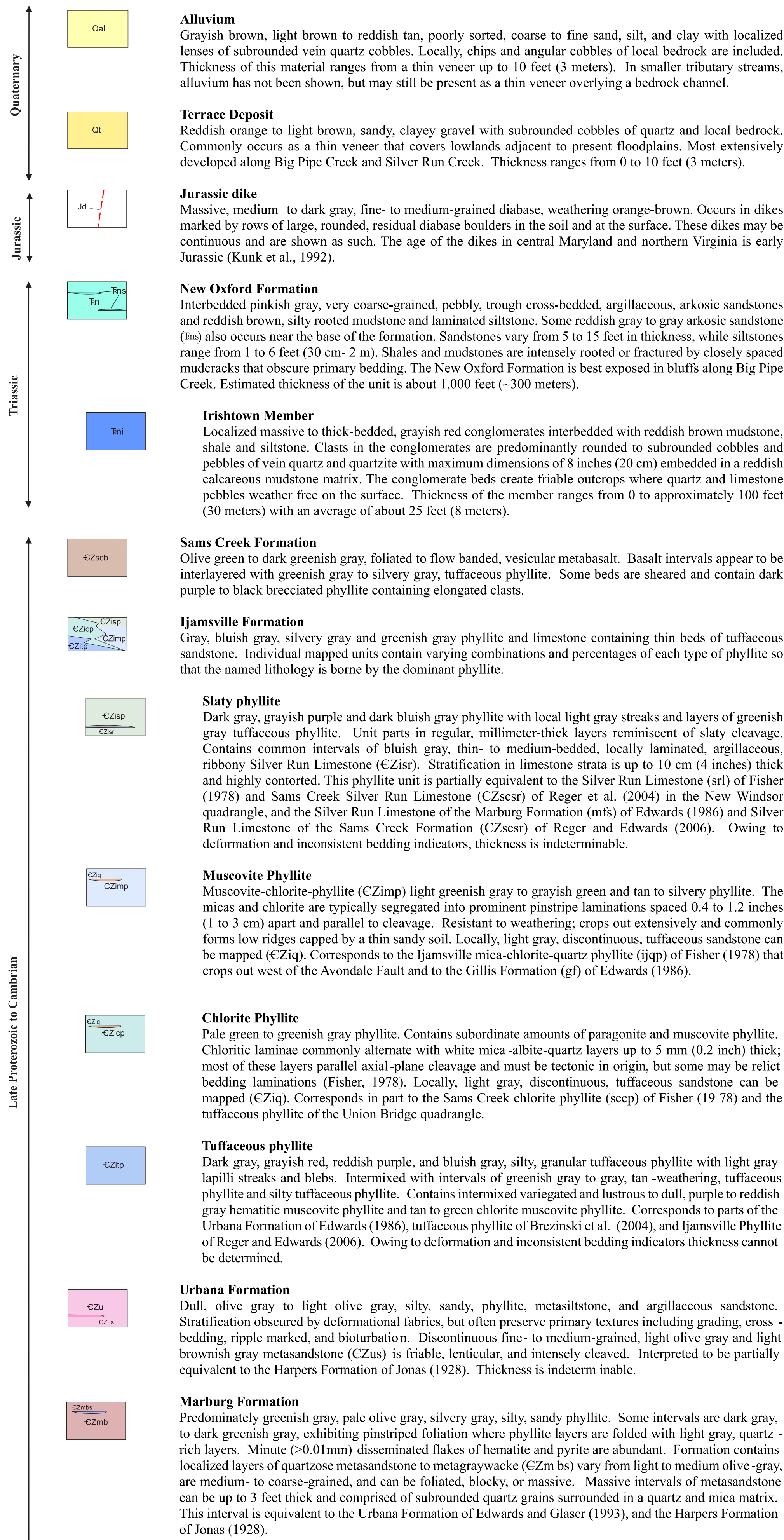


DESCRIPTION OF MAP UNITS



References Cited

- Brezinski, D.K., Southworth, Scott, and Edwards, J. Jr., 2004. Geology of the Walkersville Quadrangle, Frederick County Maryland. Maryland Geological Survey Geologic Map, scale 1:24,000.
- Edwards, J. Jr., 1986. Geologic map of the Union Bridge Quadrangle, Carroll and Frederick Counties, Maryland: Maryland Geological Survey, scale 1:24,000.
- Edwards, J. Jr., and Glaser, J.D., 1993. Geologic map of the Littlestown Quadrangle, Carroll County, Maryland: Maryland Geological Survey, open-file map, scale 1:24,000.
- Fisher, G.W., 1978. Geologic map of the New Windsor Quadrangle, Carroll County, Maryland. US Geological Survey. IMAP 1037
- Jonas A., 1928. Map of Carroll County showing the geological formations. Maryland Geological Survey, County Geologic Map, scale 1:62,500.
- Kunk, M.J., Froelich, A.J., and Gottfried, D., 1992. Timing of emplacement of diabase dikes and sheets in the Culpeper basin and vicinity, Virginia and Maryland-40Ar/39Ar age spectrum results from hornblende and K-feldspar in granophyres [abs.]. Geological Society of America Abstracts with Programs, v. 24, no. 2, p. 25.
- Reger, J.P., and Edwards, J. Jr., 2006. Geologic Map of the Union Bridge Quadrangle, Frederick and Carroll Counties, Maryland. Maryland Geological Survey Digital Geologic Maps, UNIONGEO2006.1, scale 1:24,000.
- Reger, J.P., Brezinski, D.K., Southworth, S., and Quinn, H., 2004. Geologic Map of the New Windsor Quadrangle, Carroll County, Maryland. Maryland Geological Survey Digital Geologic Maps, NEWWIGEO2004.1, scale 1:24,000.

Use Constraint: The Maryland Geological Survey makes no warranty, express or implied, as to the use or appropriateness of the data and there are no warranties of merchantability or fitness for particular purpose or use. The Maryland Geological Survey makes no representation as to the accuracy or completeness of the data and may not be held liable for human error or defect. Data are only valid at 1:24,000 scale. Data should not be used at a scale greater than that.

Acknowledgments: This version of the Littlestown quadrangle is based on mapping partially funded by the U. S. Geological Survey, National Cooperative Geologic Mapping Program, under USGS award number G22AC00575. The views and conclusions contained in this document are those of the authors and should not be interpreted as necessarily representing the official policies, either expressed or implied, of the U. S. Government.

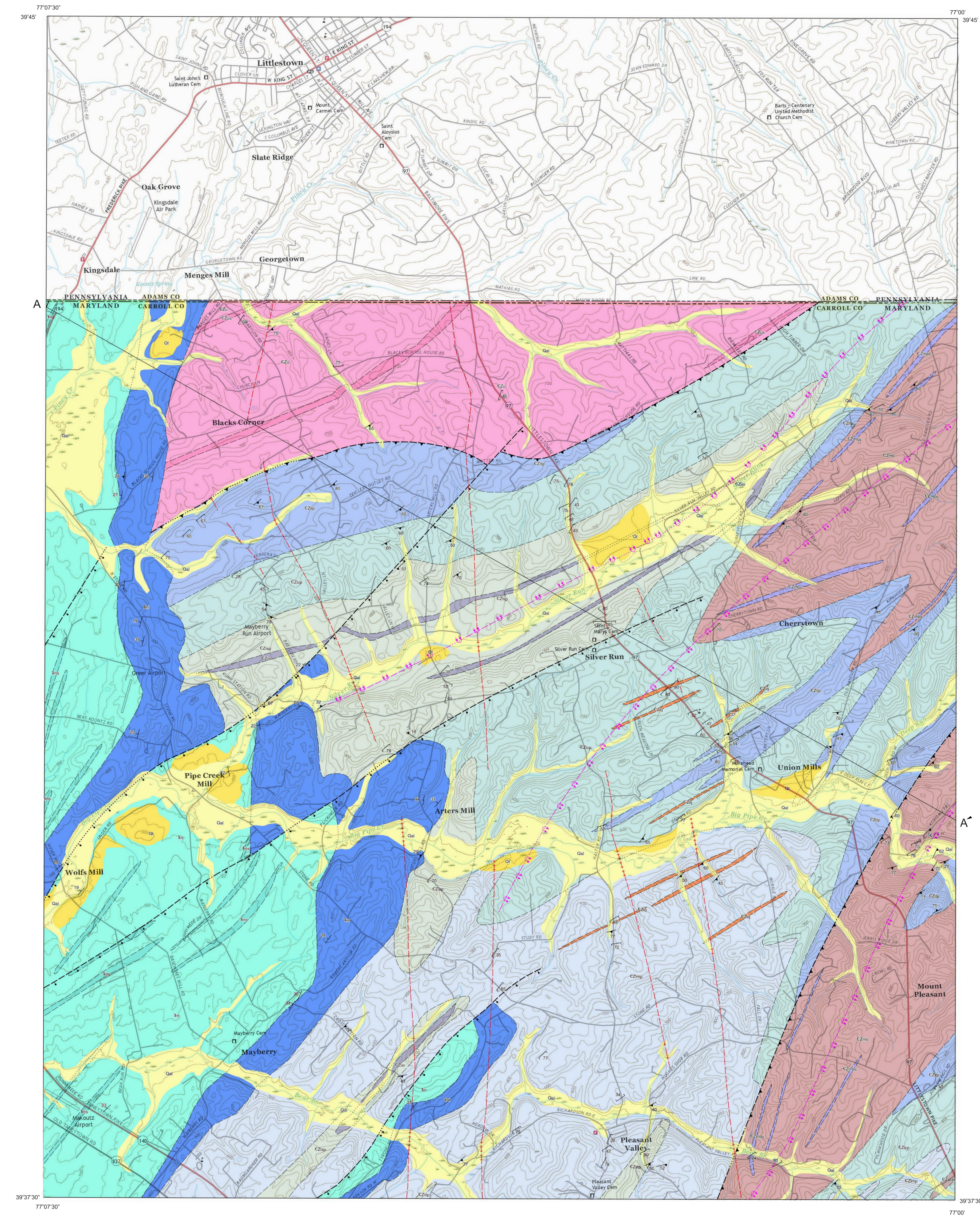
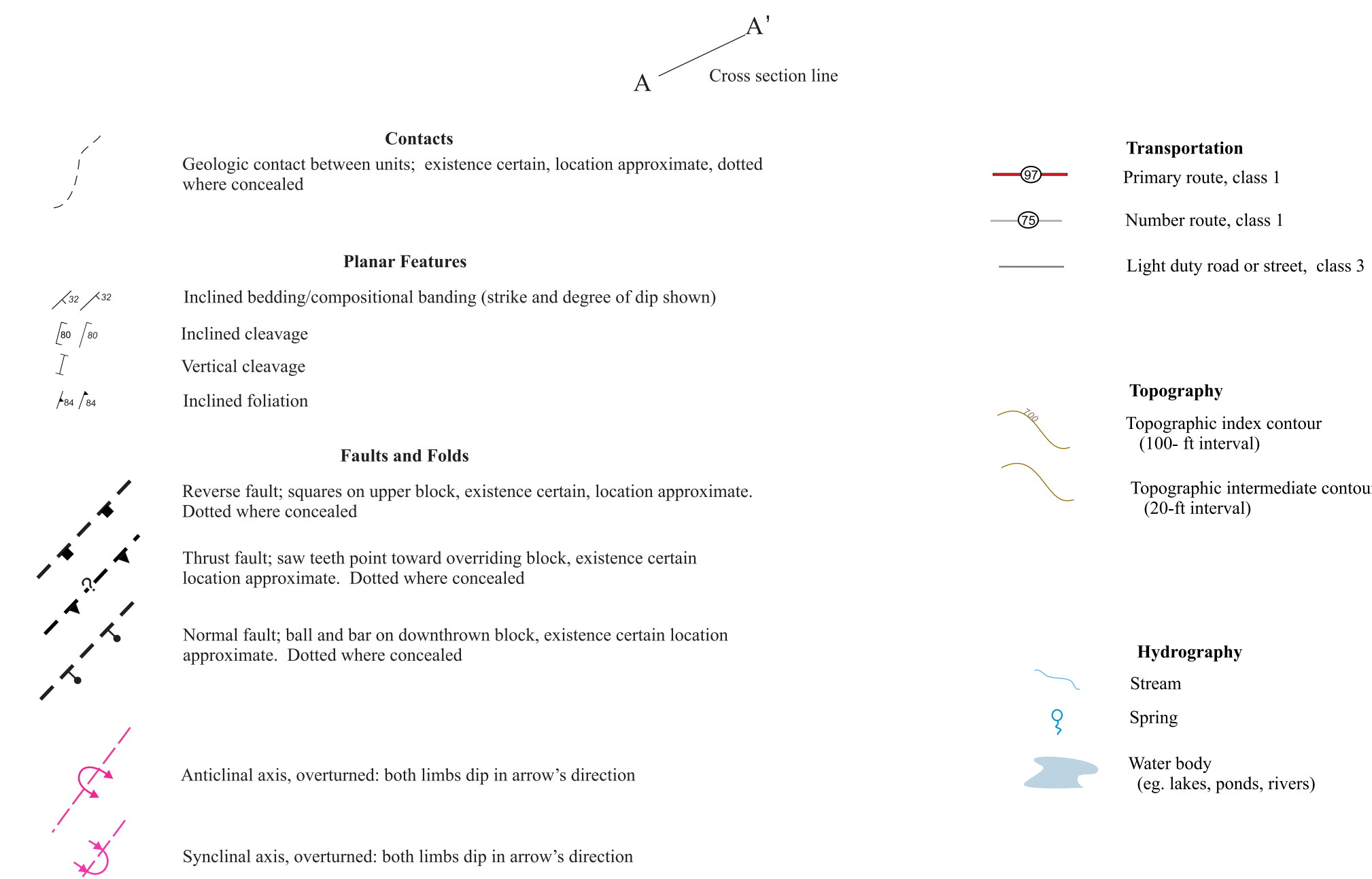
Geologic field mapping conducted 2022-2024.

The facilities and services of the Maryland Department of Natural Resources are available to all without regard to race, color, religion, sex, sexual orientation, age, national origin, or physical and mental disability.

Version: LITTL2025.1

Released July 2025

Explanation of Map Symbols

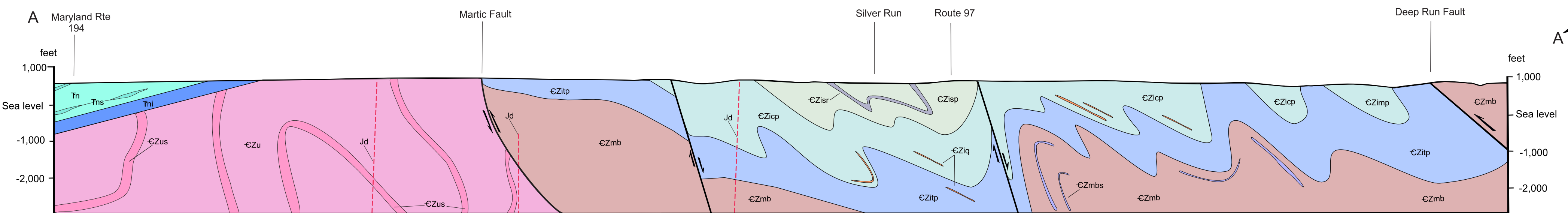
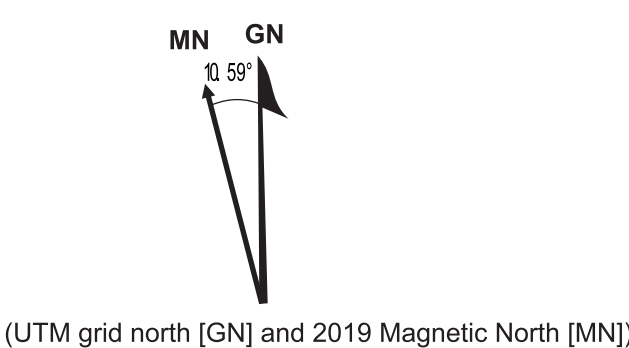
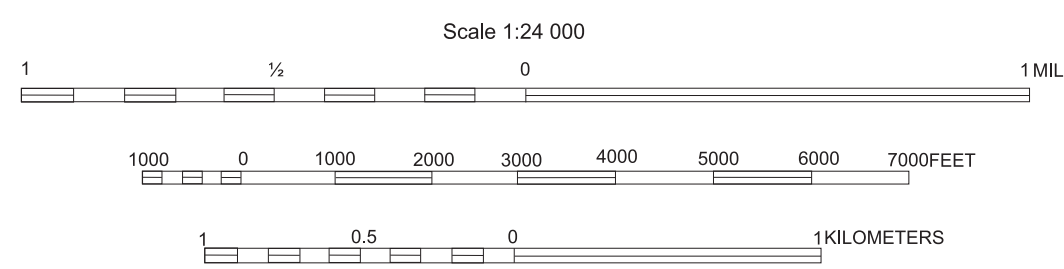


U.S. Geological Survey (USGS) US Topo 7.5-minute Series
Littlestown, MD/PA quadrangle, 2019
North American Datum of 1983 (NAD83)
World Geodetic System of 1984 (WGS84) Projection: Universal Transverse Mercator, Zone 18S
Geographic coordinates (latitude-longitude) shown near corners.
Reported 2019 magnetic north declination (center of Littlestown quadrangle): 10.59°W.
To determine current magnetic declination see: <https://www.ngm.noaa.gov/magnetic-declination.shtml>.

Contour Interval 20 Feet
National Geodetic Vertical Datum of 1988

Geologic Map of the Maryland Portion of the Littlestown Quadrangle, Carroll County, Maryland

By
David K. Brezinski
2025



Adjoining 7.5-minute quadrangles
(Littlestown quadrangle shaded)

1	2	3
4	5	6
7	8	

1 Cretaceous
2 Mesozoic
3 Hanover
4 Taneystown
5 Manchester
6 Union Bridge
7 New Windsor
8 Westminster



STATE OF MARYLAND
Wes Moore
Governor
Aruna Miller
Lieutenant Governor



DEPARTMENT OF NATURAL RESOURCES
Josh Kurtz
Secretary
David M. Goshorn, Ph.D.
Deputy Secretary

MARYLAND GEOLOGICAL SURVEY
Stephen Van Ryswick
Director

DEPARTMENT OF NATURAL RESOURCES
Publication No. DNR 12-031125-2