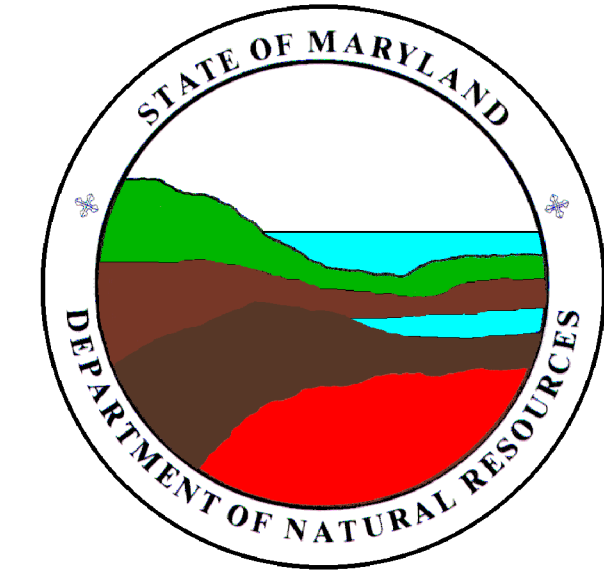


CHARLOTTE HALL QUADRANGLE
MARYLAND
7.5 MINUTE SERIES (ORTHOPHOTOQUAD)



State of Maryland
Parris N. Glendening, Governor
Kathleen Kennedy Townsend, Lt. Governor
Department of Natural Resources
J. Charles Fox, Secretary
Karen M. White, Deputy Secretary
Resource Assessment Service
Paul O. Massicot, Director
Maryland Geological Survey
Emery T. Cleaves, Director





Shoreline Changes
Charlotte Hall Quadrangle, MD

Compiled by

Maryland Geological Survey
Coastal and Estuarine Geology Program
2300 St. Paul Street
Baltimore, Maryland 21218
Telephone: (410) 554-5500
Website: www.mgs.md.gov

2001

LEGEND

-  1868 Shoreline
-  1942 Shoreline
-  1959 Shoreline
-  1993 Shoreline

SOURCES OF DATA

Base Image

Composite of resampled digital orthophoto quarter quads (Charlotte Hall - NE, NW, SE, SW) produced by the Maryland Department of Natural Resources (DNR) from aerial photography flown on April 8, 1993

Shorelines

1868 - Historical Shorelines CZM Map 10A (Maryland Geological Survey, 1975); digitized using AutoCAD

1942, 1959 - National Oceanic and Atmospheric Administration, National Ocean Service T-sheets listed below; digitized using GSMAP or AutoCAD

T-sheet	Field Edit	Date of Photography
T-8112	none	1942
T-10911	none	1959

1993 - orthophotoquad shoreline extracted from a DNR digital wetlands delineation based on photo interpretation of digital orthophoto quarter quads

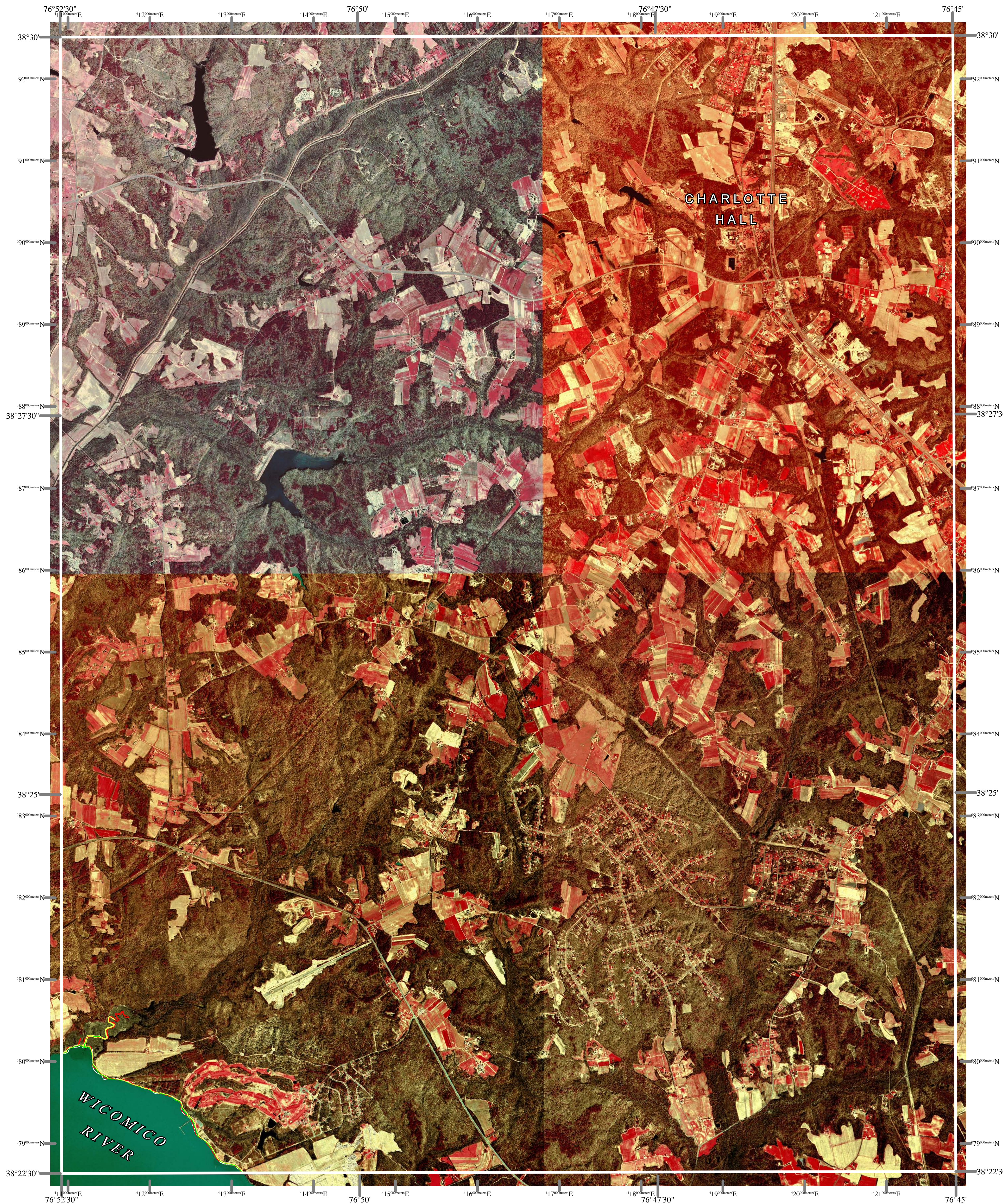
ACKNOWLEDGMENTS

This map was prepared using the geographic information system TNTmips by MicroImages, Inc.

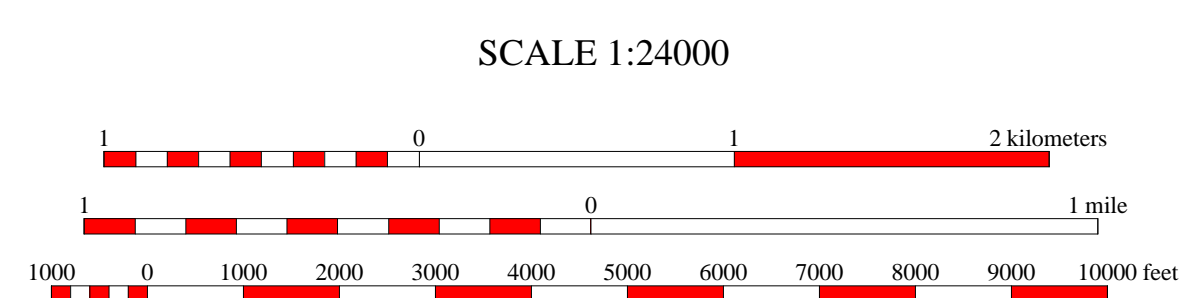
Partial funding was provided by a grant from the National Oceanic and Atmospheric Administration (Award No. NA 07OZ0118), administered by the Maryland Department of Natural Resources, Coastal Zone Management Program (CZM Grant M01-056 CZM 040).

The facilities and services of the Maryland Department of Natural Resources are available to all without regard to race, color, religion, sex, sexual orientation, age, national origin or physical or mental disability.

This document is available in alternative format upon request from a qualified individual with a disability.



North American Datum of 1983 (NAD 83)
Projection and 1000-meter grid ticks:
Maryland State Plane Coordinate System



HORIZONTAL DATUM NAD 83

CHARLOTTE HALL, MD
MGS-01-038-1
Second Edition
DATE OF PHOTOGRAPHY
April 8, 1993



1	2	3
4	5	6
7	8	

- 1 La Plata
- 2 Hughesville
- 3 Benedict
- 4 Popes Creek
- 5 Mechanicsville
- 6 Colonial Beach North
- 7 Rock Point
- 8 Leonardtown

INDEX TO ADJOINING 7.5' MAPS

