

STRATFORD HALL QUADRANGLE  
 VIRGINIA-MARYLAND  
 7.5 MINUTE SERIES (ORTHO PHOTOQUAD)



State of Maryland  
 Parris N. Glendening, Governor  
 Kathleen Kennedy Townsend, Lt. Governor

Department of Natural Resources  
 J. Charles Fox, Secretary  
 Karen M. White, Deputy Secretary

Resource Assessment Service  
 Paul O. Massicot, Director

Maryland Geological Survey  
 Emery T. Cleaves, Director





Shoreline Changes  
 Stratford Hall Quadrangle, VA-MD

Compiled by

Maryland Geological Survey  
 Coastal and Estuarine Geology Program  
 2300 St. Paul Street  
 Baltimore, Maryland 21218  
 Telephone: (410) 554-5500  
 Website: www.mgs.md.gov

2001

LEGEND

-  1868 Shoreline
-  1943 Shoreline
-  1958 Shoreline
-  1993 Shoreline

SOURCES OF DATA

Base Image  
 Digital orthophoto quarter quad (Stratford Hall - NE) produced by the Maryland Department of Natural Resources (DNR) from aerial photography flown on April 8, 1993

Shorelines  
 1868, 1943 - Historical Shorelines CZM Map 14A (Maryland Geological Survey, 1975); digitized using AutoCAD

1958 - National Oceanic and Atmospheric Administration, National Ocean Service T-sheet listed below; digitized using GSMAP or AutoCAD

T-sheet	Field Edit	Date of Photography
T-10654	none	1955, 1958

1993 - orthophotoquad shoreline extracted from a DNR digital wetlands delineation based on photo interpretation of digital orthophoto quarter quad

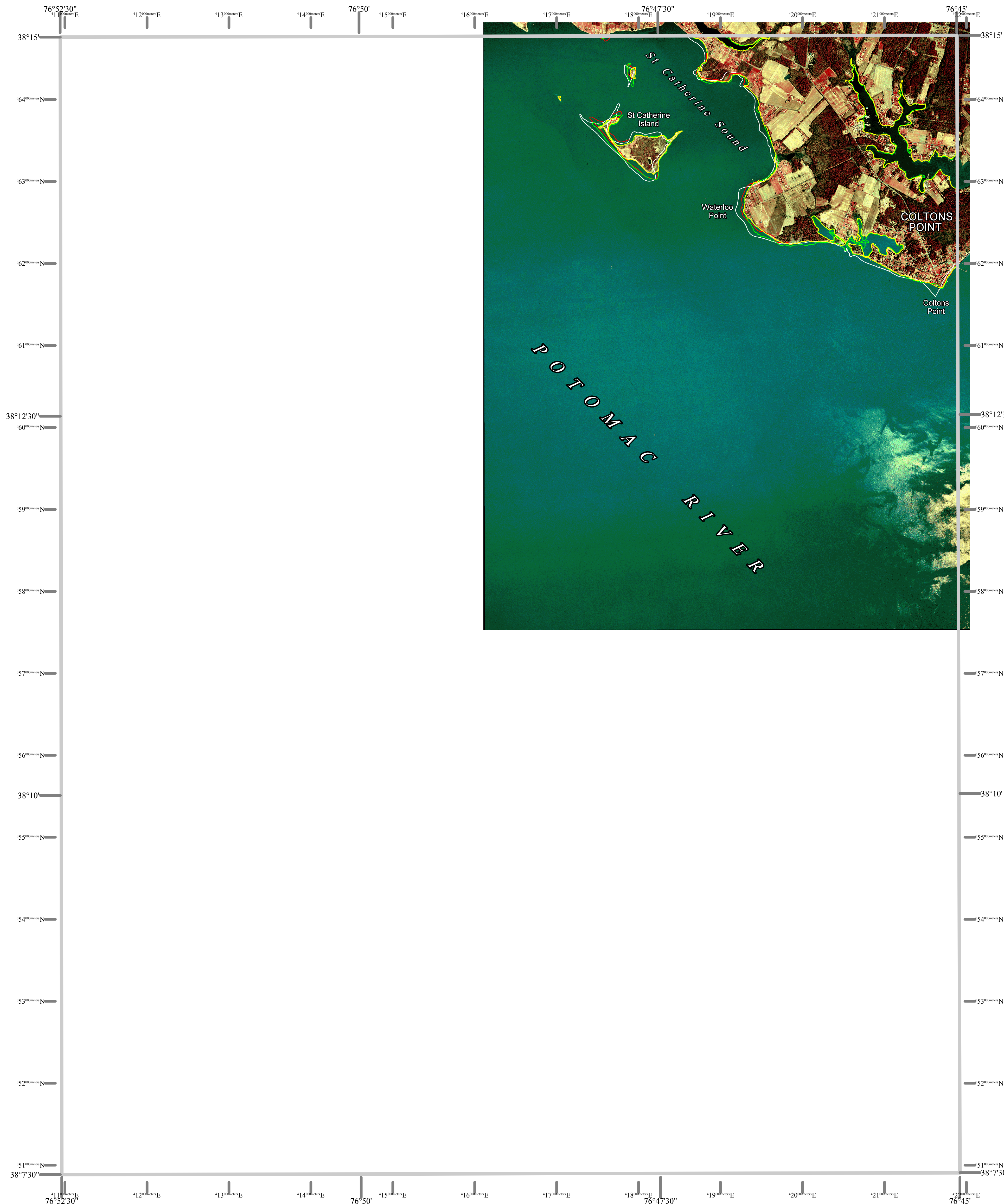
ACKNOWLEDGMENTS

This map was prepared using the geographic information system TNTmips by MicroImages, Inc.

Partial funding was provided by a grant from the National Oceanic and Atmospheric Administration (Award No. NA 07OZ0118), administered by the Maryland Department of Natural Resources, Coastal Zone Management Program (CZM Grant M01-056 CZM 040).

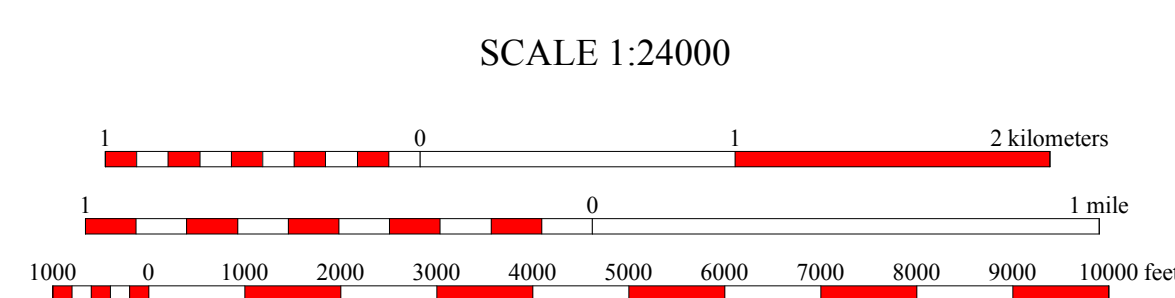
*The facilities and services of the Maryland Department of Natural Resources are available to all without regard to race, color, religion, sex, sexual orientation, age, national origin or physical or mental disability.*

*This document is available in alternative format upon request from a qualified individual with a disability.*

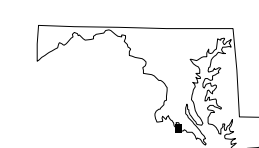


North American Datum of 1983 (NAD 83)  
 Projection and 1000-meter grid ticks:  
 Maryland State Plane Coordinate System

STRATFORD HALL, VA-MD  
 MGS-01-227-1  
 Second Edition  
 DATE OF PHOTOGRAPHY  
 April 8, 1993



HORIZONTAL DATUM NAD 83



1	2	3
4	5	6
7	8	

INDEX TO ADJOINING 7.5' MAPS

